



# Setting up Your Laptop for the First Time



## Before you start!

Before switching on your laptop for the first time, connect the AC power adapter and then press the power button to turn it on.

Please note that setup can take up to **thirty minutes**. How can you keep your update time short?

### **Avoid switching internet networks or moving your laptop.**

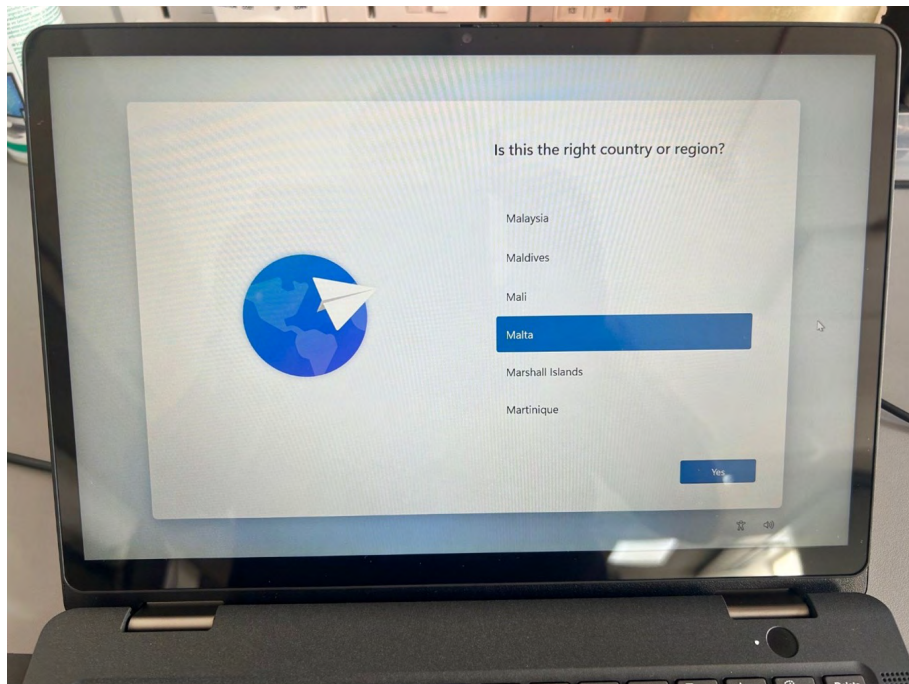
Your laptop updates faster if it remains on the same stable internet network.

### **Don't interrupt your computer's power.**

Make sure your laptop has sufficient battery power or is plugged in. Shutting down or interrupting the update process can lead to file corruption or incomplete updates.

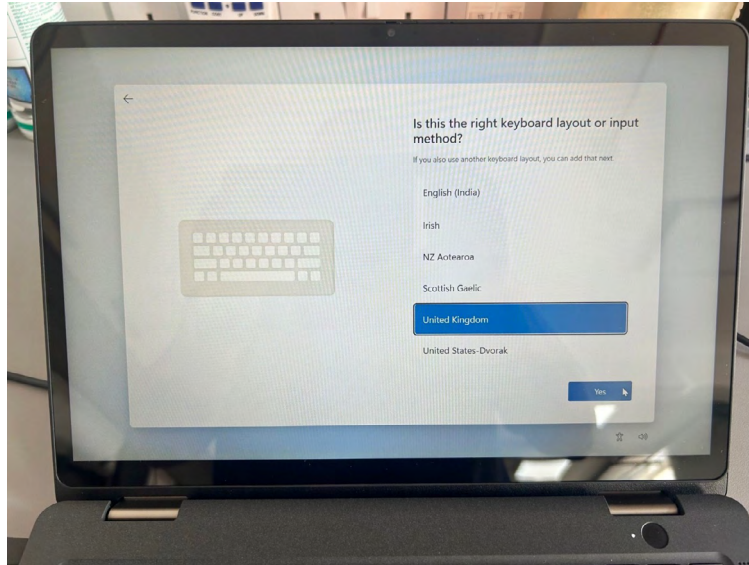
## Step 1: Selecting Your Region

Select your region by scrolling down to find Malta. Click on **Malta**, then click **Yes**.

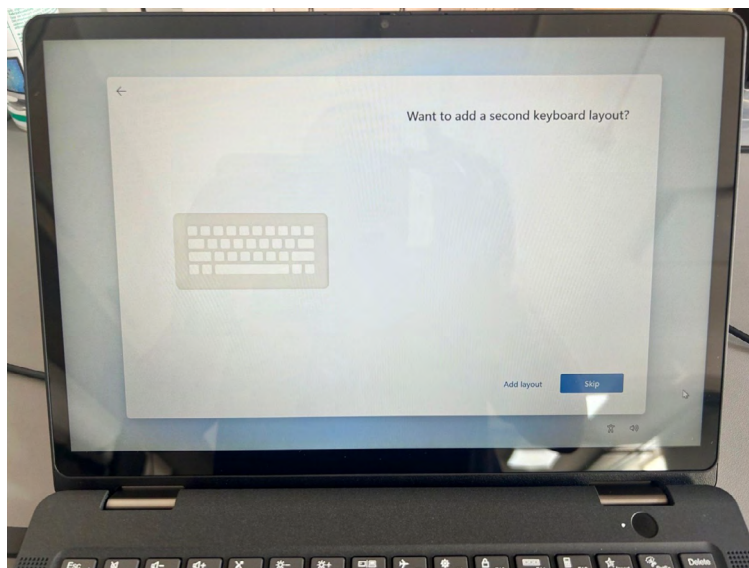


## Step 2: Selecting Your Keyboard Layout

Select the **United Kingdom** keyboard layout, and then click on **Yes**.

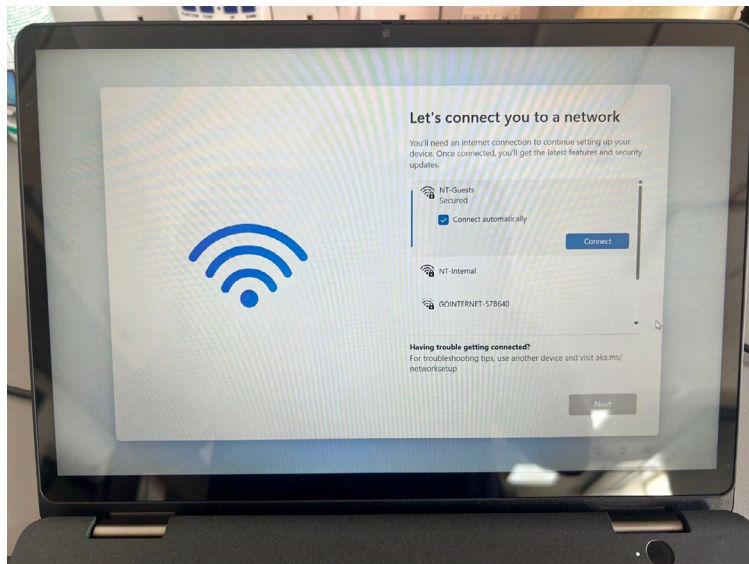


Press **Skip** on adding a secondary keyboard.



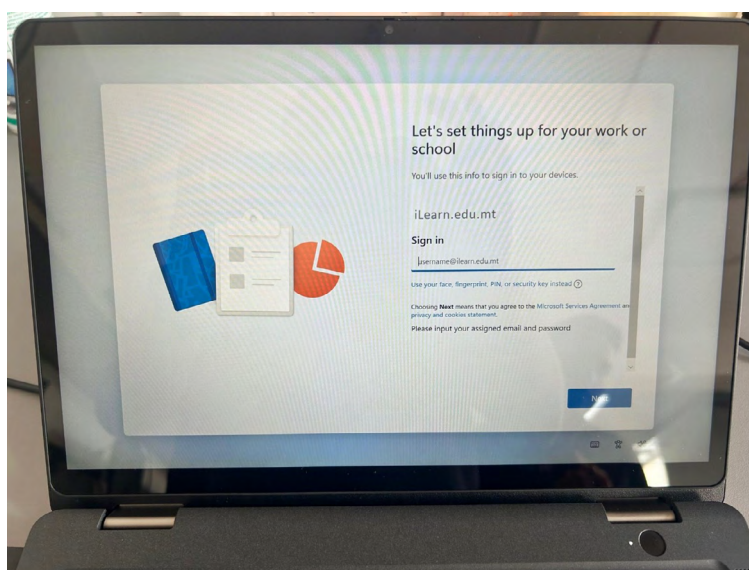
## Step 3: Connecting to a Wi-Fi Network

Select the Wi-Fi network that you wish to use. After entering the Wi-Fi network password, click **Next**. *Make sure the connection is stable and avoid switching networks or changing the laptop's location.*



## Step 4: Logging In

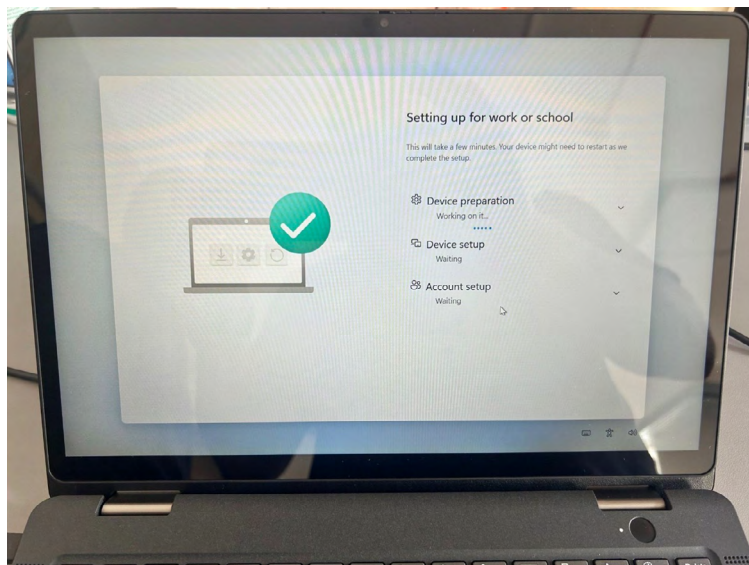
Enter your iLearn email and password and select **Next**.





## Step 5: You're Almost There!

Wait for the installation process to finish. The time taken depends on the Wi-Fi network connection and laptop power. *Try not to remove the charger, close the laptop lid, move the laptop to a different location, or disconnect from the Wi-Fi network.*



## Step 6: The Process is Complete

Once the process is complete, you will see your desktop and you can start using your laptop.

